

# Exploration and Morphology Identification of Spores Asbuscular Mycorrhizal Fungi From Horticultural Plantation

*by* Eka Susila

---

**Submission date:** 19-May-2023 06:04PM (UTC+0800)

**Submission ID:** 2096984732

**File name:** 8.\_DONE\_Artikel.pdf (458.91K)

**Word count:** 4681

**Character count:** 24565

## EXPLORATION AND MORPHOLOGY IDENTIFICATION OF SPORES ARBUSCULAR MYCORRHIZAL FUNGI FROM HORTICULTURAL PLANTATION

Eka Susila<sup>\*1</sup>, Sari Rukmana Okta Sagita Chan<sup>2</sup>, Benny Satria Achmad<sup>2</sup> and Fri Maulina<sup>3</sup>

<sup>1</sup>Magister Applied of Food Security, Politeknik Pertanian Negeri Payakumbuh, 50 Kota, Indonesia

<sup>2</sup>Horticultural Crop Study Program, Politeknik Pertanian Negeri Payakumbuh, 50 Kota, Indonesia

<sup>3</sup>Food Crop Study Program, Politeknik Pertanian Negeri Payakumbuh, 50 Kota, Indonesia

\*Corresponding author

Email: [ekasusila38@yahoo.com](mailto:ekasusila38@yahoo.com)

**Abstract.** Differences in location and rhizosphere cause differences in species diversity and population of Arbuscular Mycorrhizal Fungi (AMF). In addition, not all AMF have the same morphological and physiological characteristics, therefore it is very important to know their identity. This study aims to determine the presence and number of spores as well as to determine the morphological characteristics of AMF originating from the rhizosphere of several horticultural crops in the agricultural land of Payakumbuh State Agricultural Polytechnic. The method used in this research is descriptive exploratory method by means of purposive sampling for soil sampling. While the stages of this research include: taking and collecting data in the field, determining the point of location for soil sampling, taking soil samples, analyzing soil properties in the laboratory, isolating AMF spores and identifying AMF spores morphologically. The conclusions of this study are 1) The population of AMF spores in horticultural land is high. The highest spore population was found in soil samples of the root area of shallot plants (556 spores per 10 g of soil), while the lowest number of spores was in soil samples of eggplant root areas (271 spores per 10 g of soil), 2) AMF exploration in several horticultural crops in the agricultural land of the Payakumbuh State Agricultural Polytechnic, based on morphological identification (shape, color and size), the AMF found consisted of three genera, namely *Glomus* sp, *Gigaspora* sp, and *Scutelospora* sp.

**Keywords:** arbuscular mycorrhizal fungi; horticultural crops; exploration; identification and morphology

### 1. Introduction

Soil as a place to grow plants needs to be preserved because in the soil, especially in the rhizosphere of plants, there are many mikroorganisms that are useful for plants. One of them is the Arbuscular Mycorrhiza Fungi (AMF). Mycorrhiza are known as soil fungi because their habitat in the root area or rhizosphere. Almost 80% of plant species in nature interact or have symbiosis with mycorrhiza. The symbiosis of AMF with plants had been reported 400 million years ago (Selosse *et al.*, 2015). Such types of links are established as a succession of biological processes, which lead to a variety of useful effects in both natural ecosystem and agricultural biotas (Van der Heijden *et al.*, 2015). The diversity and distribution of mycorrhiza varies widely, this can be caused by various environmental conditions. These environmental factors that affect the distribution of AMF are soil structure, P, N nutrients in the soil, organic C content, water, pH, and soil temperature (Hartoyo *et al.*, 2011). Moreover, communal nutrients also relocate from fungi to the plant, along with other related effects, which is probably why AMF improve plant tolerance to biotic and

<sup>1</sup> abiotic factors (Plassard and Dell, 2010). They have the ability to improve characteristics of soil and consequently encourage plant development in normal as well as in stressful circumstances (Navarro *et al.*, 2014). Differences in <sup>7</sup> location and rhizosphere also cause differences in species diversity and AMF population, besides that all AMF do not have the same morphological and physiological characteristics, therefore it is very important to know their identity (Hartoyo *et al.*, 2011).

In Lima Puluh Kota District, especially in the agricultural land area of Payakumbuh State Agricultural Polytechnic, research on mycorrhiza has not been done much, especially regarding its existence (diversity), population and morphological characteristics of AMF spores in the root area or rhizosphere of horticultural crops. Based on reason, it is necessary to explore AMF in the land. One way that can be done to determine the number or population of AMF spores is by means of isolation. Isolation is carried out so that the spores are separated from the soil sample so that the characteristics of AMF spores and their numbers can be known. Meanwhile, to determine the morphological characteristics of AMF spores, morphological identification can be done. Morphological identification was carried out by looking at the shape and color of AMF spores through a microscope. This research aims <sup>4</sup> to determine the presence and number of spores as well as <sup>5</sup> to determine the morphological characteristics of AMF from the rhizosphere of several horticultural crops in the agricultural land of Payakumbuh State Agricultural Polytechnic.

## 2. Methods <sup>21</sup>

This research was conducted in Biology Laboratory of the Payakumbuh State Agricultural Polytechnic from January until July 2020. The materials used were soil samples from rhizosphere of horticultural crops, glucose solution 60%, PVLG solution, KOH 10%, HCL 2%, dye solution (glycerol, lactic acid, trypan blue), NaOCl 10%, water and distilled water.

The research was conducted with an exploratory descriptive method by purpose sampling for soil sampling (taking soil samples whose location was based on the researcher's consideration). The implementation of research by field survey and laboratory analysis data (soil chemical, morphological identification of AMF spores). The data collected were in the form of qualitative data and species diversity of indigenous AMF. The data were analyzed descriptively by simply arranging and displaying in the form of tables and figures by comparing the data between samples.

### 2.1. Soil sampling.

Soil samples were taken from the rhizosphere of several horticultural crops (shallots, tomatoes, spring onion, eggplant, cabbage and long beans) located in agricultural land Payakumbuh State Agricultural Polytechnic. At each location,  $\pm$  200 grams of soil samples were taken to observe AMF spores and soil chemical. Soil samples were taken around the plant  $\pm$  10 cm

from <sup>13</sup> the base of the stem or the rhizosphere zone <sup>12</sup> of the plant at a depth of 0-20 cm. Furthermore, the soil samples were dried for 1 week and put in labeled plastic bags to be stored at room temperature (15-20°C) before being analyzed.

## 2.2. Isolation and identification of AMF spores

### 2.2.1 AMF spore isolation.

Spore isolation is carried out to separate the spores from the soil sample so that AMF can be identified to determine the spore genus. The method used is the wet sieving. Method from Dandan and Zhiwei (2007). 10 g of soil sample with 3 replications was added with <sup>17</sup> 150 ml of water and stirred for 2 minutes. The suspension was then left to stand for 10 seconds, and the soil fraction was filtered using a stratified sieve measuring 300, 125, and 63  $\mu\text{m}$ . The trapped spores in each filter are taken and filtered on filter paper by spraying water. Then transferred by spraying distilled water to the petridish to observe the type and morphology of spores based on the publication of Invam (2014).

### 2.2.2. Morphological identification of spores

AMF spores obtained from isolation were identified and counted. Spore identification was carried out by placing the spores on PVLG (Polyvinyl-Lacto-Glycerol) using glass slides. Then attach / close the PVLG with coverslip and press with a rubber pencil tip on each coverslip. Furthermore, it was observed using a microscope with 100x magnification and labeled once identified. The results of the various FMA identification observations were documented in the form of slides.

AMF spores that have been identified to the genus level are collected and counted. Spore counting was carried out directly by transferring the 1 mL spore suspension on a watch glass with four replications. The watch glass is shaken to rotate counter clockwise so that the spores are concentrated in the middle (Invam, 2014). All spores were observed and their numbers were counted from each genus.

## 3. Results and Discussion

### 3.1 Soil Sampling Locations

Soil sampling derived from the rhizosphere of several horticultural crops at the location of the Payakumbuh State Agricultural Polytechnic agricultural land. The altitude at the location of the agricultural land is  $\pm 540$  masl. The observation of AMF diversity was carried out at several horticultural planting locations. Soil sampling was based on differences in the types of horticultural plants <sup>26</sup> in the experimental field of Payakumbuh State Agricultural Polytechnic (Purposive Random Sampling). Based on this approach, there are 6 locations for soil sampling on horticultural planting areas. The map of the location for sampling soil samples can be seen in Figure 1.

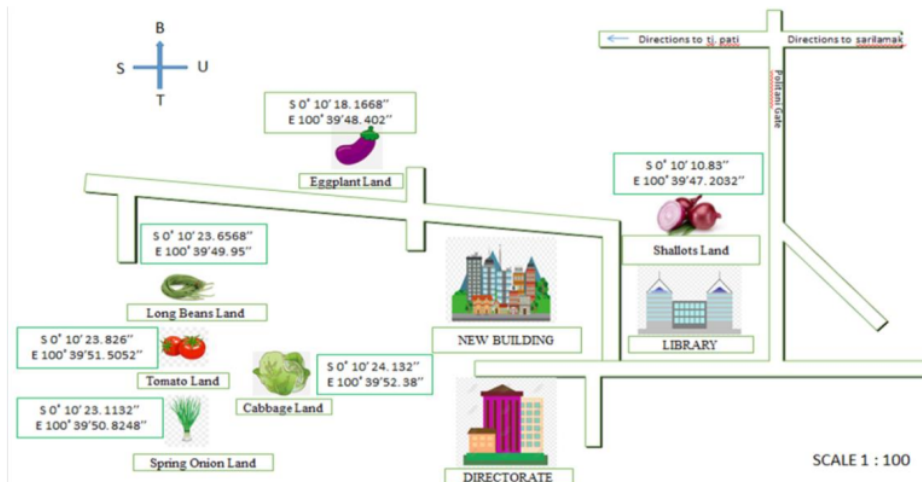


Figure 1. Locations of soil sampling of several horticultural crops in agricultural land Payakumbuh State Agricultural Polytechnic.

### 3.2 The Number of AMF Spores

In Table 1 it can be seen that each soil sample has a different number of spores (per 10 g of soil). Many factors cause differences in the density or number of AMF spores. It caused by differences in soil conditions and content (Meng *et al.* 2021).

Table 1. Spora Density of Arbuscular Mycorrhizal Fungi (per 10 g of soil)

No.	Horticultural plants	Number of spores per sieve size			Amount
		63 $\mu\text{m}$	125 $\mu\text{m}$	300 $\mu\text{m}$	
A.	Shallots	556	0	0	556
B.	Tomato	432	13	0	445
C.	Spring onion	465	26	0	491
D.	Eggplant	268	3	0	271
E.	Cabbage	496	12	0	508
F.	Long beans	409	0	0	409

The density of AMF spores in all soil samples was high. Soil is the most influential factor in the different types and spore density (Mahulette *et al.*, 2021). Soil factors such as soil texture and structure, N and P nutrients, water, and pH significantly affect the distribution of mycorrhizae (Husna *et al.*, 2015). As stated by Puspitasari *et al.*, (2012) that the high spore population caused by environmental conditions that are suitable, optimal and suitable for the growth and development of AMF spores.

Another reason that caused the high spore count was when the research was conducted in the dry season, start from January to July 2019. The dry season or limited water conditions is thought to increase spore sporulation. According to Guaderrama *et al.*, (2014) that the number of spores will vary according to season, AMF colonization is highest during high rainfall conditions, while the number of spores is highest at the end of the dry season.



In Table 1, it can be seen that the lowest number of spores is in eggplant land. The infectivity and effectiveness of mycorrhizae are primarily determined by biotic factors such as the type of mycorrhizae, the host plant, microbial interactions, the type of soil of the host plant, and the composition between fungi and abiotic factors such as environmental factors, especially soil (Meng *et al.*, 2021).

Table 1 Density of Arbuscular Mycorrhizal Fungi spores (per 10 g of soil). Each type of plant has a different response to AMF types and soil types (related to soil pH and fertility). On the other hand, AMF has differences in the ability to increase nutrient absorption and plant growth, so that it will provide a difference in the level of symbiotic effectiveness between the two (plants and AMF) in the field. It was reported that eggplant plants have a moderate level of dependence (Samsi *et al.*, 2017) on AMF (Mycorrhizal dependency concept: the relative rate at which plants depend on the presence of mycorrhizal fungi to achieve maximum growth at certain soil fertility levels). If the level of dependence of the plant is high on AMF, then the plant will give a positive growth response to AMF inoculation. This is thought to have caused the low number of AMF spores in eggplant land.

In Table 1, it can be seen that the overall number of spores was found in the 63  $\mu\text{m}$  sieve compared to the number of spores in the 125 and 300  $\mu\text{m}$  sieves. According to Nusantara *et al.*, (2012) that *Glomus* has an average spore size of 50-100  $\mu\text{m}$  so that more spores are found in the 63  $\mu\text{m}$  sieve. It can be concluded that the type most commonly found is *Glomus sp.* The type of *Glomus sp.* has a wider distribution than other AMF types. Based on result Marizal *et al.* (2016) the existence of *Glomus sp.* was more dominant than other types of AMF indigenous. Various studies have reported that *Glomus* species are dominant in various ecosystems. As reported by Maria (2007), *Glomus* is the dominant species found in the three land use types in Sumberdaya Lampung, followed by *Gigaspora*, *Acaulospora* and *Scutelospora*. Likewise, reported by Susila (2017) that the dominant *Glomus sp.* species was found in the shallots rhizosphere from three growing locations with different plains (low, medium and highlands). *Glomus sp.* was also found in all sample locations of citronella plants in West Sumatra (Balai Batu, Laiang and Simawang) (Armansyah *et al.*, 2018).

### 3.3 Soil Analysis Observations

One of the factors that determine the growth and density of AMF spores is the condition and chemical content of the soil. The results of soil analysis on the pH of H<sub>2</sub>O from the six samples ranged from 5.5 to 6.6. The available P and C-organic values from the six locations were classified as very high (Pusat Penelitian dan Pengembangan Tanah, 2012).

Spore germination can be influenced by environmental factors such as pH, temperature, soil moisture and organic matter. Based on the chemical soil pH of the six soil samples was

classified as acidic to slightly acidic. Soil pH can affect the activity of enzymes that play a role in germination, growth and plant development. AMF will be effective when applied to less favorable soil. According to Danesh *et al.*, (2007), AMF has the specific ability of these species to increase plant growth in unfavorable soil conditions by forming extensive hyphae in the soil (innate effectiveness) to absorb nutrients and water.

**Table 2.** Results of Analysis of Chemical Soil Properties in Rhizosphere of Several Horticulture Crops in Agricultural Land Payakumbuh State Agricultural Polytechnic.

No.	Plant Sources	pH H <sub>2</sub> O	P Available Bray II (ppm)	C Organic (%)	Water Content (%)
1.	Shallots	6.00	24.20	5,50	10.26
2.	Tomato	5,50	23.10	8.47	16.40
3.	Spring onion	5,50	198.00	8.14	16.50
4.	Eggplant	6.50	31.90	7.92	14.40
5.	Cabbage	6.50	275.00	6.60	13.14
6.	Long beans	5,50	34.10	7.48	18.20

Source: Land Laboratory of Payakumbuh State Agricultural Polytechnic (2020)

The land where the soil sampling was carried out was the Payakumbuh State Agricultural Polytechnic experimental land. The land is often fertilized with organic matter (manure) and chemical fertilizers (SP<sub>36</sub>). Fungi participate in decomposition of organic matter and deliver nutrients for plant growth. Their role is very important in plant protection against pathogenic microorganisms as biological agents, which influences soil health (Frąc *et al.*, 2015). AMF significantly affects the concentrations of P and N and the N:P ratio in plant (Wang *et al.*, 2012). This is reinforced by the results of Susila (2018) study which reported that the availability of P was very strong with root colonization, where the higher the P the lower the colonization that occurred between AMF and plant roots. If external hyphal growth is inhibited.

According to Ishii (2004), P concentrations in the medium that exceed 50 ppm will inhibit AMF colonization. However, the optimal amount of P depends on the ianang plant and the type of AMF. Susila reported that the number of spores increased as the P available. At available P 63.45 ppm, there was a decrease in the number (population) of AMF. It can be seen in Table 2 that although the available P is much higher than other sample plants (exceeding 50 ppm), the number of spores per gram of soil is still relatively high.

The availability of C-organic is related to soil fertility. If the soil has low availability of C-organic (<1), the soil fertility is low, characterized by a lack of macro and micro nutrients because one of the functions of organic matter is to provide macro and micro nutrients (Pusat Penelitian dan Pengembangan Tanah, 2012). In fertile soil the roots are actively working while the symbiosis with AMF decreases. This is related to the principle of mutualistic symbiosis where when the soil fertility is good, plants will not ask for help in other microorganisms, including AMF.

Table 2 shows that the C-organic in all sample soils is very high (> 5) (Pusat Penelitian

dan Pengembangan Tanah, 2012). However, in soil that has a pH below neutral, the availability of other macro and micro nutrients can decrease. This can cause the spores to be still effective so that overall, the availability of spores is still relatively high per gram of soil. Table 2 shows that the higher the soil organic C content, the number of spores decreases. This is because the more organic matter in the soil, it will affect soil moisture which causes low AMF sporulation. One of the roles of organic matter is to increase the soil's ability to hold water. According to the opinion of Hardjowigono (2010), the amount of organic matter will affect the soil moisture status. In moist soil conditions, the sporulation process (spore formation) of AMF becomes lower so that the number of spores contained in the soil is also small (Burhanuddin, 2012). In the sample soil of shallots, with the lowest C-organic content among the other sample soils, the number of spores was the highest.

Water content affects the number of AMF spores. Various studies have reported that the number of AMF spores is more found in soils that have a low water content than those with a high moisture content. During the dry season with limited water availability, AMF will form spores to survive, so that the number of spores will increase (Guaderrama *et al.*, 2014). If the soil water content contains enough water, it will stimulate the spores to germinate so that the number of spores decreases. Elita *et al.*, (2018) reported that the application of AMF to rice cultivation using the SRI method (System of Rice Intensification Method) showed a high level of root colonization and spore count. In Table 2, it can be seen that the highest number of spores on shallot land with the lowest water content is 10.26%.

### 3.4 Morphological Identification of AMF Spores

The identification of arbuscular mycorrhizal fungi is carried out based on the similarity of spore morphological characteristics including color, spore shape, size and ornament Invam (2014). The stages of AMF identification are as follows:

1. Color of spores: using the standard color chart that is commonly used. The colors of mycorrhizal spores range from hyaline yellow, greenish yellow, brown, reddish brown to blackish brown.
2. Spore shape: in general, the shape of the spores is globe, sub globose, oval.
3. Spore size,
4. Has ornament and spore contents such as bulbous, spines, fine threads such as hair, spines, and others.

Identification of AMF which has abundant spores and is found in the rhizosphere of all observed horticultural plants is as follows *Glomus* sp. The spores found were round to oval in shape, the color of the spores ranged from light yellow, brown to reddish brown and shiny black. Spore walls are slippery. Pass the 125  $\mu\text{m}$  and 250  $\mu\text{m}$  sieve (Figure 2).



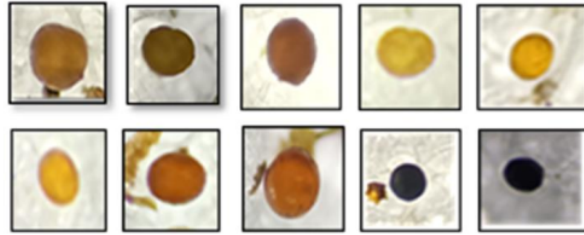


Figure 2. Different Types of *Glomus sp* Derived from Several Rhizosphere Horticultural Crops

The genus *Glomus* is characterized by a round to oval shape, the spore wall consists of more than one layer, smooth. The color of the spores of the genus *Glomus* varies from yellow, brownish yellow, reddish brown, clear white (hyaline), light brown, to dark brown and blackish (Invam, 2014). There is often a substanding hypha, size 108- 341  $\mu\text{m}$ .

*Gigaspora* has a bulbous suspensor. Spores are round and slightly rounded. The color of the spores is yellow, reddish brown to blackish. Has a smooth, single-layered spore wall, has no ornament. The spores are relatively large, passing through a 250  $\mu\text{m}$  filter (Figure 3).

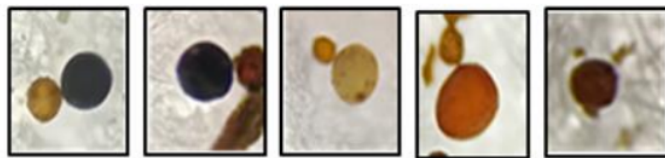


Figure 3. Different Types of *Gigaspora sp* Derived from Several Rhizosphere Horticultural Crops

The genus *Gigaspora* has features; single spores in the soil (143-500  $\mu\text{m}$ ), form globose or sub globose; yellow, brownish yellow, to blackish, slimy white, golden yellow (Schenck and Perez, 1990), the contents of the spore contain an oil-like fluid, do not have ornamentation, the hyphae form bulbous suspensors or rounded hyphae holders, spores grow at the tip of the "bulbous suspensor" (hyphae bulging like tiny spores) germ tube emerges directly from the spore wall (Invam, 2014).

*Scutelospora sp.* The shape of the spores is round to irregular, the color of the spores is clear, dirty, gray to black, the surface of the spores is smooth, the walls are rather thick. There is a germination shield. In spores rather dirty. Pass the 125  $\mu\text{m}$  sieve (Figure 4).

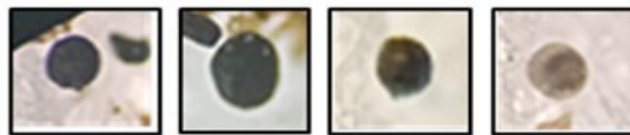


Figure 4. Different Types of *Scutelospora sp.* Derived from Several Rhizosphere Horticultural Crops

The genus *Scutelospora* has features; produce single spores in the soil, in the form of globos or sub globos and sometimes irregular; measuring 58 - 500  $\mu\text{m}$ , hyaline, brownish yellow, red, have two layers of thin spore walls, have a germination shield (Invam, 2014).

#### 4. Conclusions

The conclusions of this study are 1) The population of AMF spores in horticultural agricultural land is high. The highest spore population was found in soil samples of the root area of shallot plants (556 spores per 10 g of soil), while the lowest number of spores was in soil samples of eggplant root areas (271 spores per 10 g of soil), 2) AMF exploration in several horticultural crops in the agricultural land of the Payakumbuh State Agricultural Polytechnic, based on morphological identification (shape, color, size, and ornament), the AMF found consists of three genera, namely *Glomus sp.*, *Gigaspora sp.* and *Scutelospora sp.*

#### Acknowledgement

We would like to thanks to the DIPA Politeknik Pertanian Negeri Payakumbuh with contract number 195/PL25/PL.00.02/2020 and the Ministry of Research and Technology with contract number 265/E4.1/Ak.04.PT/2021 that found the research so this research had been done as well. The author would like to thank all those who helped fulfilled the research process, the technicians of Biology Laboratory of the Payakumbuh State Agricultural Polytechnic.

#### References

- Anwar, A., Syarif, A., & Febriamansyah, R. (2018). Eksplorasi and Identifications of the Indigenous Arbuscular Mycorrhizal Fungi (AMF) in the Rhizosphere of Citronella (*Andropogon nardus* L.) in the Dry Lands Regions in West Sumatra Province, Indonesia. *Journal on Advanced Science Engineering Information Technology*, 8(1), 85-92.
- Burhanuddin. (2012). Keanekaragaman Jenis Jamur Mikoriza Arbuskula pada Tanaman Jabon (*Anthocephalus* spp). *Jurnal Tengkuwang* 2 (1), 10-18.
- Dandan, Z. & Zhiwei, Z. (2007). Biodiversity of Arbuscular Mycorrhizal Fungi in the Hot-Dry Valley of the Jinsha River, Southwest China. *Applied Soil Ecology*. 37, 118-128.
- Danesh, Y. R., E. M. Goltapeh., A. A Lizadek, A. Varma & K. G. Mukerji, (2007). Arbuscular-Mycorrhizal Fungi Associated with Alfalfa Rhizosphere in Iran American-Eurasian. *Journal of Agriculture and Environment Science*, 2(5), 574-580.
- Elita, N., E. Susila, & Yefriwati. (2018). The Potential Types of Indigenous Arbuscular Mycorrhizal Fungi as Sources of Inoculum and Their Effect on Rice Production Using the System of Rice Intensification Method. *Pakistan Journal Nutrition*. 17 (12), 697-701.
- Fraç, M., Jezierska-Tys, S., & Takashi, Y. (2015). Occurrence, Detection, and Molecular and Metabolic Characterization of Heat-Resistant Fungi in Soils and Plants and Their Risk to Human Health. *Adv. Agron*. 132, 161–204.
- Guaderrama, P., S. Castilo, J. A. Ramos Zapata & L. V. Hernandez-Cueves. (2014). Arbuscular Mycorrhiza Fungi Communities in Changing Environmens the Effect of Scasonality And Anthropogenic Disturbance In a Seasonal Dry Forest. *Pedobiologia Journal of Soil Biology*, 57, 87 – 95.
- Hardjowigono, S. (2010). Ilmu Tanah. Jakarta, Indonesia: Akademik Press.

- Hartoyo, B., M. Ghulamahdi, L. K. Darusman, S. A. Aziz, & I. Mansur. (2011). Keanekaragaman Fungi Mikoriza Arbuskula (FMA) pada Rizosfer Tanaman Pegagan (*Centella asiatica* L) Urban. *Jurnal Littri* 17 (1), 32- 40.
- Invam. (2014, 25 December). *International Culture Collection of (Vesicular) Arbuscular Mycorrhizal Fungi*. Retrieved from <http://fungi.invam.wvu.edu/the-fungi/species-descriptions.html>
- Ishii, T. (2004). *Vesicular-Arbuscular (VA) Mycorrhizae*. Retrieved from <http://www.bio.kpu.ac.jp/pomlab/VAMinf.html>.
- Husna, Budi S. W, Mansur I, & Kusmana D. C. (2015). Diversity of Arbuscular Mycorrhizal in The Growth Habitat of Kayu Kuku (*Pericopsis mooniana* Thw.) in Southeast Sulawesi. *Pakistan J Biol Sci*, 18(1), 1-10. <http://org.10.3923/pjbs.2015.1.10>.
- Mahulette, A. S., A. Alfian, M. Zainal, Nendissa, Wattimena, Tanasale, Makaruku, & Laisina. (2020). Growth of Forest Clove Seedlings at Different Concentrations of Paclobutrazol. *IOP Conf Ser: Earth Environ Sci*, 575, 012081. <http://doi.org/10.1088/1755-1315/575/1/012081>
- Maria, V. R. (2007). Populasi dan Keanekaragaman Fungi Mikoriza Arbuskula pada Tiga Tipe Penggunaan Lahan yang Berbeda di Sumber Jaya Lampung. *Prosiding Seminar Nasional Mikoriza II*. Bogor. 17-21 Juli 2007.
- Marizal, S., Muzakkir & Syariyah, A. (2016). The Diversity of Arbuscular Mycorrhiza Fungus (AMF) Indigenous in Peanuts (*Arachis Hypogea* L) Rhizosphere under Different Elevation. *Jurnal Trop Soils*. 21 (2), 109-114.
- Meng L, Srivastava, Kuča, Giri, Rahman & Wu. (2021). Interaction Between Earthworms and Arbuscular Mycorrhizal Fungi in Plants: a review. *Phyton (B. Aires)* 90(3), 687-699. <http://doi.org/10.32604/phyton.2021.015427>
- Navarro, J. M., Perez-Tornero, O. & Morte, A. (2014). Alleviation of Salt Stress in Citrus Seedlings Inoculated with Arbuscular Mycorrhizal Fungi Depends on The Root Stock Salt Tolerance. *Jurnal Plant Physiol*. 171 (1), 76–85. <http://doi.org/10.1016/j.jplph.2013.06.006>
- Nusantara, A. D., Y. H. Bertham & I. Mansur. (2012). Bekerja dengan Fungi Mikoriza Arbuskula. Seameo Biotrop. Bogor.
- Plassard, C., Dell, B. (2010). Phosphorus Nutrition of Mycorrhizal Trees. *Tree Physiol*. 30, 1129–1139. <http://doi.org/10.1093/treephys/tpq063>
- Puspitasari D., K. Indah & H. Anton. (2012). Eksplorasi Vesicular Arbuscular Mycorrhiza (VAM) Indigenous pada Lahan Jagung Sampang Madura. *Jurnal Sains dan Seni ITS Surabaya*, 1(2), 19-22. <http://dx.doi.org/10.12962/j23373520.v1i1.1119>
- Pusat Penelitian dan Pengembangan Tanah. (2012). *Petunjuk Teknis : Analisis Kimia Tanah, Tanaman, Air dan Pupuk*. Retrieved from [https://balittanah.litbang.pertanian.go.id/ind/dokumentasi/juknis/juknis\\_kimia.pdf](https://balittanah.litbang.pertanian.go.id/ind/dokumentasi/juknis/juknis_kimia.pdf)
- Samsi, N., Pata & Y. S., Thaha, A. R. (2017). Isolasi Dan Identifikasi Morfologi Spora Fungi Mikoriza Arbuskula Pada Daerah Perakaran Beberapa Tanaman Hortikulturadi Lahan Pertanian Desa Sidera. *Jurnal Agrotekbis* 5 (2), 204 - 211.
- Susila, E. (2018). Budi Daya Bawang Merah (*Allium Ascalonicum* L.) Pada Lahan Kering Dataran Rendah Sumatra Barat Dengan Pemanfaatan Fungi Mikoriza Arbuskula (FMA) Indigenous (Doctoral dissertation). Retrieved from <http://scholar.unand.ac.id/42247/>
- Susila, E., A. Anwar., A. Syarief, & Agustian. (2017). Population and Diversity of Indigenous Arbuscular Mycorrhizal Fungi from the Rhizosphere of Shallots at Different Altitudes in West Sumatra. *International Journal on Advanced Science Engineering Information Technology*, 7(5), 1886-1893. <http://doi.org/10.18517/ijaseit.7.5.1592>
- Selosse, M. A., Strullu-Derrien, C., Martin, F. M., Kamoun, & S., Kenrick, P. (2015). Plants, Fungi and Oomycetes: a 400-Million Years Affair that Shapes the Biosphere. *New Phytol*. 206, 501–506. <http://doi.org/10.1111/nph.13371>
- Van der Heijden, M. G., Martin, F. M., Selosse, M. A., & Sanders, I. R. (2005). Mycorrhizal

- Ecology and Evolution: The Past, The Present, and The Future. *New Phytol.* 205, 1406–1423. <http://doi.org/10.1111/nph.13288>
- Wang, Y., Jing, H. & Gao, Y. (2012). Arbuscular Mycorrhizal Colonization Alters Subcellular Distribution and Chemical Forms of Cadmium in *Medicago sativa* L. and Resists Cadmium Toxicity. *PLoS One* 7, 3161–3164. <http://doi.org/10.1371/journal.pone.0048669>

# Exploration and Morphology Identification of Spores Asbuscular Mycorrhizal Fungi From Horticultural Plantation

## ORIGINALITY REPORT

15%

SIMILARITY INDEX

10%

INTERNET SOURCES

10%

PUBLICATIONS

6%

STUDENT PAPERS

## PRIMARY SOURCES

1	<a href="http://www.ncbi.nlm.nih.gov">www.ncbi.nlm.nih.gov</a> Internet Source	3%
2	<a href="http://www.forestry-ideas.info">www.forestry-ideas.info</a> Internet Source	1%
3	Submitted to University of KwaZulu-Natal Student Paper	1%
4	<a href="http://media.neliti.com">media.neliti.com</a> Internet Source	1%
5	Amrizal Amrizal, Fazlimi Fazlimi, Deswani Panggabean. "TATA RUANG AGROFORESTRY LAHAN KAMPUS II POLITEKNIK PERTANIAN NEGERI PAYAKUMBUH JORONG BATU KABAU NAGARI SITANANG", LUMBUNG, 2020 Publication	1%
6	"Mycorrhizosphere and Pedogenesis", Springer Science and Business Media LLC, 2019 Publication	1%
7	<a href="http://mail.scialert.net">mail.scialert.net</a>	



1 %

8

Dasih Rahmawati, Sri Nuryani Hidayah Utami, Cahyo Wulandari. "Chapter 5 Effectiveness of Manure Addition and Mycorrhiza on Phosphorus Uptake and Yield of Maize in Kalitirto Inceptisol", Springer Science and Business Media LLC, 2017

Publication

1 %

9

Submitted to Universitas Brawijaya

Student Paper

1 %

10

Submitted to Institut Pertanian Bogor

Student Paper

1 %

11

"Arbuscular Mycorrhizas and Stress Tolerance of Plants", Springer Science and Business Media LLC, 2017

Publication

<1 %

12

Nelson Elita, Agustamar, Eka Susila. "The Effects of the Application of Trichoderma Asperellum and Biochar on Growth and Productivity of Rice Cultivated by the SRI Method and on Soil Quality", IOP Conference Series: Earth and Environmental Science, 2022

Publication

<1 %

13

Ceng Asmarahman, Hendra Prasetya, Dian Iswandaru, Indra Gumay Febryano. "The Effectiveness Analysis of Arbuscular

<1 %

Mycorrhizal Fungi (AMF) and Ameliorant Treatments on the Growth of Red Jabon Seedling on Soil Medium Post-Lime Mining", International Journal of Design & Nature and Ecodynamics, 2023

Publication

---

14

. Sukmawati, Adnyana I..M, Suprpta, D.N, Proborini M, . Hirjani. "Isolation and Characterization of Indigenous AMF on Dry Land in Central Lombok", KnE Life Sciences, 2022

Publication

---

15

"Plant Microbiome: Stress Response", Springer Science and Business Media LLC, 2018

Publication

---

16

Hendra, Z. J. Trinovita, M. Riza Nurtam, Indra Laksmana et al. "The Implementation of the Internet of Things (IoT) on an Automatic Plant Watering and Fertilizing System Based on Solar Electricity", IOP Conference Series: Earth and Environmental Science, 2022

Publication

---

17

[rsucon.rsu.ac.th](http://rsucon.rsu.ac.th)

Internet Source

---

18

Abdoulaye Fofana Fall, Grace Nakabonge, Joseph Ssekandi, Hassna Founoune-Mboup, Arfang Badji, Issa Balde, Malick Ndiaye.

<1 %

<1 %

<1 %

<1 %

<1 %

"Diversity of Arbuscular Mycorrhizal Fungi Associated with Maize in the Eastern Part of Uganda", IECD 2022, 2022

Publication

19

[repo.unand.ac.id](http://repo.unand.ac.id)

Internet Source

<1 %

20

Ayu Kurnia Illahi. "PEMANFAATAN GULMA PAITAN (*Tithonia diversifolia*) SEBAGAI PUPUK KOMPOS UNTUK MENINGKATKAN PERTUMBUHAN DAN PRODUKSI TANAMAN KACANG TANAH (*Arachis hypogaea* L.)", *Journal of Food Crop and Applied Agriculture*, 2022

Publication

<1 %

21

Gema Dradhani, Anidarfi. "APLIKASI POC CUCIAN BERAS UNTUK MENINGKATKAN PERTUMBUHAN DAN PRODUKSI TANAMAN KACANG TANAH (*Arachis hypogaea* L.)", *Journal of Food Crop and Applied Agriculture*, 2022

Publication

<1 %

22

[journals.guilan.ac.ir](http://journals.guilan.ac.ir)

Internet Source

<1 %

23

[ppnp.e-journal.id](http://ppnp.e-journal.id)

Internet Source

<1 %

24

[text-id.123dok.com](http://text-id.123dok.com)

Internet Source

<1 %

25

[www.cell.com](http://www.cell.com)

Internet Source

<1 %

---

26

Y Sondang, R Siregar, K Anty. "Identification of endophytic and rhizosphere bacteria in rice (*Oryza sativa* L.) in the experimental field at Payakumbuh State Agriculture Polytechnic, West Sumatra, Indonesia", IOP Conference Series: Earth and Environmental Science, 2021

Publication

<1 %

---

27

S. Bhardwaj. "Distribution of vesicular-arbuscular mycorrhizal fungi in the natural ecosystem", *Folia Microbiologica*, 12/1997

Publication

<1 %

---

Exclude quotes Off

Exclude matches Off

Exclude bibliography On

# Exploration and Morphology Identification of Spores Asbuscular Mycorrhizal Fungi From Horticultural Plantation

---

## GRADEMARK REPORT

---

FINAL GRADE

**/0**

GENERAL COMMENTS

**Instructor**

---

PAGE 1

---

PAGE 2

---

PAGE 3

---

PAGE 4

---

PAGE 5

---

PAGE 6

---

PAGE 7

---

PAGE 8

---

PAGE 9

---

PAGE 10

---

PAGE 11

---